

- System Routines - [All]
- NEW SYSTEM ROUTINE
 - 1ST STREET
 - 42ND STREET
 - 57TH STREET
 - 61ST STREET
 - KATY MILLS
 - MEMORIAL STREET
 - MISSION BEND
 - RELAY EXAMPLES
 - SHERIDAN STREET
 - WESTCHASE
 - YALE STREET
 - CHAMBERS SPRING CKT
 - MUSKOGEE TERMINAL
 - ALTERNATE
 - PRIMARY
 - SEL-321.FST
 - ONETA TERMINAL

Relay Testing This Month
Completed 57
Scheduled 18

DOBLE PROTECTION SOFTWARE

Comprehensive solutions for verifying system protection

DOBLE ENGINEERING COMPANY



PROTECTION SOFTWARE SOLUTIONS



Whether you are testing electromechanical relays or state-of-the-art, IEC 61850 designs, Doble has the software you need to verify system protection.

Our office and field software options help you verify any protection and control circuit and simulate system conditions. Options are flexible so you can customize your testing program and adhere to your company's practices and procedures, while meeting regulatory requirements. Choose which combinations make sense for your organization.

PROTECTION ASSET & TEST DATABASE PowerBase

PowerBase is the premier application for administrators to manage and report on protection asset maintenance and engineering records. It helps simplify NERC PRC-005 compliance and trending.

PowerBase is the core piece of your protection testing program: manage your workflows, connect with existing work management systems, automate activities, eliminate manual processes, maintain compliance and optimize efficiency within your organization.

CLIENT/SERVER DATABASE APPLICATION

Numerous workstation computers run PowerBase simultaneously from a single database that operates on a local or Doble-hosted server.

VENDOR-NEUTRAL DATABASE THAT HANDLES ANY POWER SYSTEM ASSET

PowerBase tracks maintenance on relays, CTs/VTs, breakers, transformers, batteries and any other asset. PowerBase features import and export modules for data transfer with other systems and testing tools.

SETTINGS MANAGEMENT WAREHOUSE

PowerBase houses and manages relay settings, allowing you to consolidate settings data from disparate applications, spreadsheets and files.

REPORT ENGINE

PowerBase features a powerful, user-friendly report generator. Reports can be configured to suit your business needs.

COMPLETE PROTECTION ASSET & COMPLIANCE DASHBOARD

Users can easily find information and see a dashboard presenting the whole maintenance picture. This is possible even with many workers and the variety of engineering and testing software products they use.

Substation Name	Fast Type	ID Number	Terminal	Phase	Manufacturer	Relay Style/Model	IEEE Device	Last Test Date	Next Test Date	Test Freq	Last Test Result	Prev Test Date	IEC Reportable
1ST STREET	HU	NA	XFWR 1 DFF	B PH	WHIABB	298B346A09	ETT	7/20/2013	7/27/2013	36	FAILS	8/14/2007	Yes
1ST STREET	HU	NA	XFWR 2 DFF	C PH	WHIABB	298B346A09	ETT	7/15/2010	7/14/2013	36	FAILS	8/10/2007	Yes
1ST STREET	HU	NA	XFWR 1 DFF	A PH	WHIABB	298B346A09	ETT	8/14/2010	8/13/2013	36	FAILS	7/9/2007	Yes
1ST STREET	HU	NA	XFWR 2 DFF	B PH	WHIABB	298B346A09	ETT	8/2/2013	8/2/2013	36	FAILS	8/20/2007	Yes
1ST STREET	HU	NA	XFWR 1 DFF	C PH	WHIABB	298B346A09	ETT	8/15/2010	8/14/2013	36	FAILS	7/19/2007	Yes
1ST STREET	HU	NA	XFWR 2 DFF	A PH	WHIABB	298B346A09	ETT	8/17/2010	8/16/2013	36	FAILS	7/12/2007	Yes
42ND STREET	HU	NA	XFWR 1 DFF	A PH	WHIABB	298B346A09	ETT	10/22/2010	10/21/2013	36	FAILS	11/16/2007	Yes
42ND STREET	HU	NA	XFWR 2 DFF	C PH	WHIABB	298B346A09	ETT	11/20/2010	11/20/2013	36	FAILS	10/20/2007	Yes
42ND STREET	HU	NA	XFWR 1 DFF	C PH	WHIABB	298B346A09	ETT	11/11/2010	11/10/2013	36	FAILS	11/09/2007	Yes
42ND STREET	HU	NA	XFWR 2 DFF	B PH	WHIABB	298B346A09	ETT	10/23/2010	10/22/2013	36	FAILS	11/11/2007	Yes
42ND STREET	HU	NA	XFWR 1 DFF	A PH	WHIABB	298B346A09	ETT	10/23/2010	10/22/2013	36	FAILS	11/11/2007	Yes
42ND STREET	HU	NA	XFWR 1 DFF	B PH	WHIABB	298B346A09	ETT	11/10/2010	11/09/2013	36	FAILS	11/07/2007	Yes
1ST STREET	CO-B	NA	XFWR 2 BU	ALARM	WHIABB	187323AA	50S1	7/3/2010	7/30/2013	36	FAILS	8/17/2007	Yes
1ST STREET	CO-B	NA	XFWR 1 BU	ALARM	WHIABB	187323AA	50S1	8/14/2010	8/13/2013	36	FAILS	7/9/2007	Yes
1ST STREET	CO-B	NA	XFWR 2 BU	A PH	WHIABB	1873043A	50S1	7/30/2010	7/29/2013	36	FAILS	8/16/2007	Yes
1ST STREET	CO-B	NA	XFWR 1 BU	GND	WHIABB	1873266A	50S1	7/6/2010	7/6/2013	36	FAILS	7/28/2007	Yes
1ST STREET	CO-B	NA	XFWR 1 BU	B PH	WHIABB	1873043A	50S1	7/2/2010	7/20/2013	36	FAILS	8/7/2007	Yes
1ST STREET	CO-B	NA	XFWR 1 BU	C PH	WHIABB	1873043A	50S1	7/2/2010	7/10/2013	36	FAILS	7/21/2007	Yes
1ST STREET	CO-B	NA	XFWR 2 BU	GND	WHIABB	1873266A	50S1	7/3/2010	7/30/2013	36	FAILS	8/17/2007	Yes
1ST STREET	CO-B	NA	XFWR 1 BU	A PH	WHIABB	1873043A	50S1	8/7/2010	8/6/2013	36	FAILS	7/20/2007	Yes
1ST STREET	CO-B	NA	XFWR 2 BU	B PH	WHIABB	1873043A	50S1	7/3/2010	7/11/2013	36	FAILS	7/10/2007	Yes
1ST STREET	CO-B	NA	XFWR 2 BU	C PH	WHIABB	1873043A	50S1	8/17/2010	8/16/2013	36	FAILS	7/12/2007	Yes
42ND STREET	CO-B	NA	XFWR 2 BU	B PH	WHIABB	1873257A	50S1	10/18/2010	10/17/2013	36	FAILS	11/6/2007	Yes

DATABASE OF ALL ASSETS

GROUP	NAME	RANGE	FORMAT CODE	SETTING	COMMENTS
0	RELID			138KV MT 120 INTER	
0	TRMID			PHARR LINE MERETT SL	
0	Z1MAG			0.35	
0	Z1ANG			74.24	
0	Z0MAG			1.08	
0	Z0ANG			78.21	
0	LOCAT			Y	
0	LL			2.19	
0	CTR			240.n	

Settings Status

Pending Completed
 Deployed Approved
 Tested Historical

General Setting Comment

ELEMENT 50G1 FOUND TO OPERATE AT 7% UNDER ACTUAL SETTING. THIS IS TYPICAL FOR ALL 50G ELEMENTS OF THE SEL-321 RELAY SET AT THE MINIMUM VALUE OF 0.500 AMP.

TOLERANCE FOR THE 50G1 WERE LEFT AS +/- 5%, SO THE TEST WAS GIVEN A FAIL, BUT THE OVERALL ROUTINE WAS GIVEN A PASS AS THE ACTUAL OPERATION VALUE IS EXPECTED BASED ON PREVIOUS TESTING PRACTICES OF THE SEL-321.

RELAY SETTINGS MANAGEMENT

New Results

Substation Name	Terminal	ID Number	Relay Type	Last Test Date	Last Test Res
1ST STREET	FDR V-2	R-119336	CO-9	6/28/2016	FAIL
1ST STREET	FDR V-2	R-119337	CO-9	6/28/2016	PASS
42ND STREET	BKR 300	R-120389	SEL-421	4/27/2016	FAIL
1ST STREET	BKR 101	R-11930382	CO-8	4/12/2016	PASS
1ST STREET	BKR 101	R-119304012	CO-9	4/12/2016	PASS
1ST STREET	TEST	R-119303926	CO-9	3/31/2016	PASS
1ST STREET	FDR V-1	R-119303978	CO-9	3/30/2016	PASS
1ST STREET	FDR V-1	R-119303971	CO-9	3/30/2016	PASS
MEMORIAL STREET PALMHURST LINE	R-124427	SEL-351		3/4/2016	FAIL
1ST STREET	FDR V-1	R-119302	CO-11	12/1/2015	PASS
1ST STREET	FDR V-1	R-119354	CO-9	11/16/2015	PASS
1ST STREET		R-119303974	GE - L90	11/12/2015	

Yearly Workorder Status

Completed: 82.04%
Open: 17.96%

Relay Testing This Month

Completed: 57
Scheduled: 18

Test Percent Error

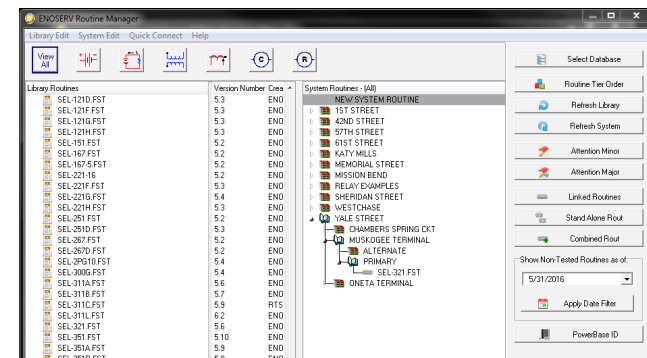
% Error: -15, -10, -5, 0, 5, 10

CUSTOMIZED DASHBOARDS TO TRACK DATA

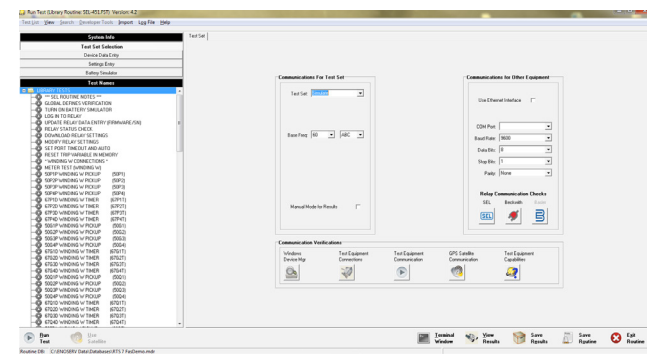
PROTECTION TESTING SOFTWARE



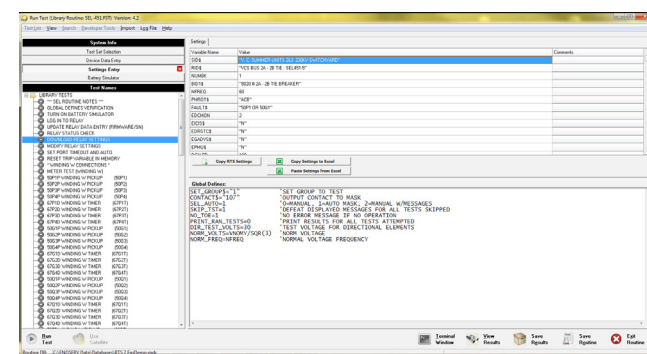
Doble offers a variety of software options for basic through complex testing requirements. Choose the software or combination of software that best fits your protection testing program.



SELECT YOUR TEST FROM THE LIBRARY



SET UP EQUIPMENT & RELAY COMMUNICATIONS



RUN TEST

RTS

RTS is ideal for testing and capturing data during commissioning and field performance/compliance testing.

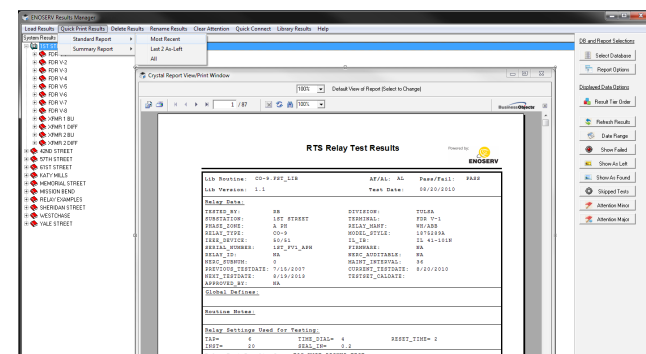
RTS is a vendor-neutral software which allows you to connect to a variety of relay test sets in your test equipment inventory.

RTS features powerful automation tools that reduce complexity. It offers an extensive relay test plan library to quickly perform standardized tests. Your teams will save time thanks to the robust communication tools that help automate and simplify testing.

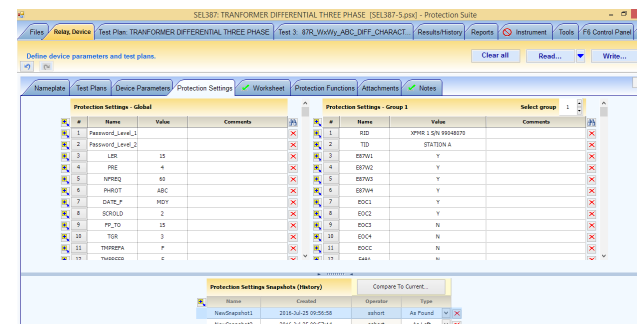
You can also make test plan modifications in one location by quickly editing in the library, which updates hundreds of relay test plans.

RTS can also capture and store important maintenance information for CTs/VTs, DC control circuitry, communication systems and more.

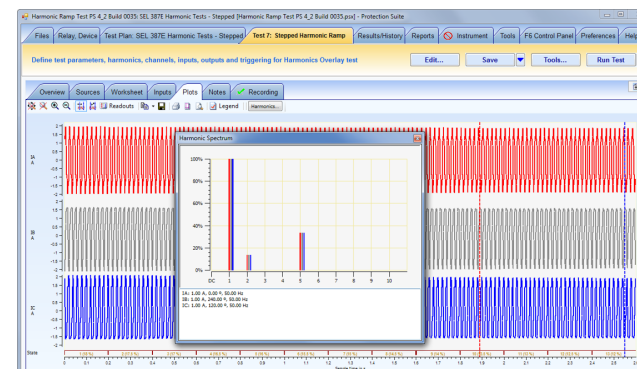
RTS works seamlessly with PowerBase as your complete protection testing program from the field to the office.



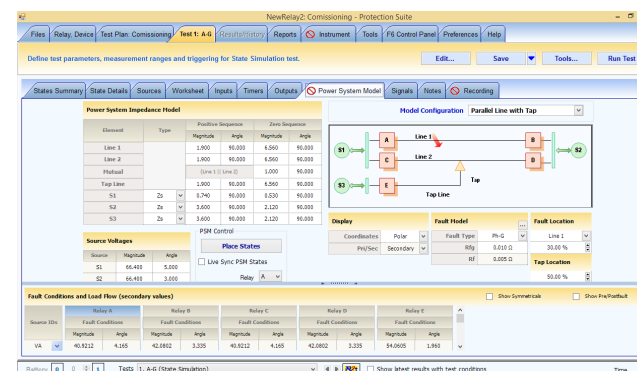
GENERATE YOUR REPORT



IMPORT RELAY SETTINGS



RUN SPECIALIZED TESTS



POWER SYSTEM MODELS

Protection Suite

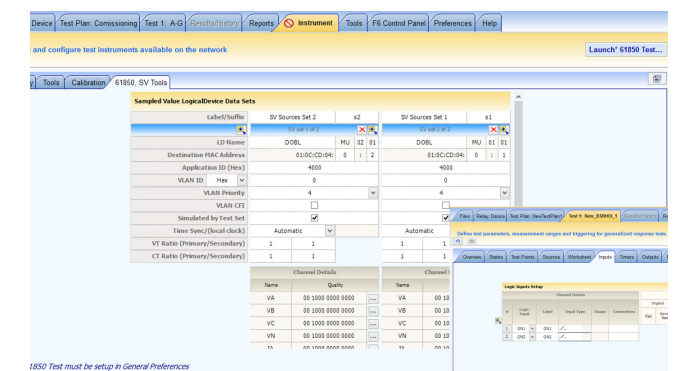
Protection Suite software is a complete, no-compromise, protection testing solution. Run manual and automated tests for protection-scheme verification, including IEC 61850 sampled values and GOOSE schemes.

With changes in technology, you need a software tool that allows you to test old and new types of devices. Protection Suite is your solution with its time-tested static, dynamic and digital test routines. Quickly create tests with the basic wizard tool and power system models.

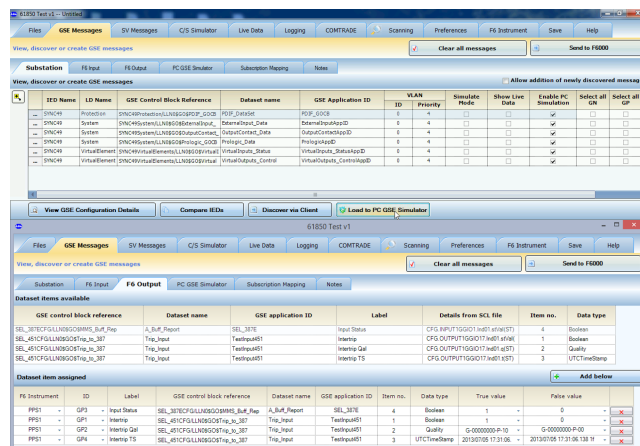
Protection Suite offers users the capability to control and manipulate test types, giving users multiple ways of testing and proving a device. Simulate realistic system conditions and power quality issues, such as flicker and harmonic in-rush, using the transient wave generator.

Protection Suite is used with Doble's F-series test equipment; it also connects with PowerBase to create a comprehensive data-management system for storing, trending, system planning analysis and for reporting to regulatory agencies.

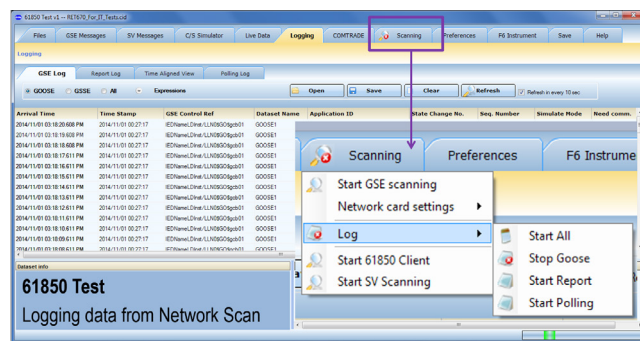
Protection Suite is available in a number of levels. Mix and match the levels that are appropriate for your organization's testing and reporting requirements.



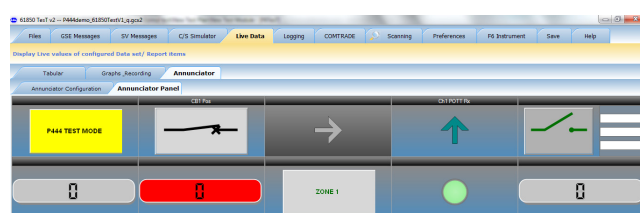
IEC 61850 COMPLIANT TESTING



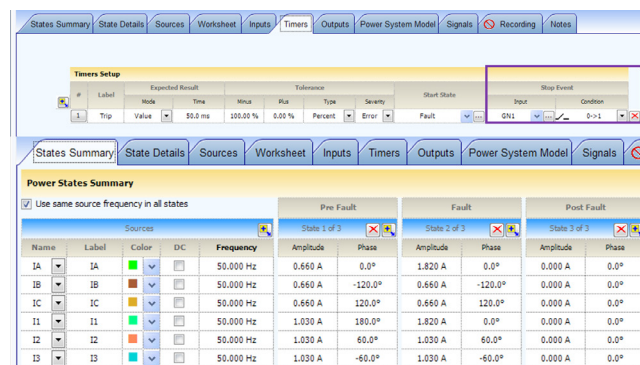
DISCOVER GOOSE MESSAGES & CONFIGURE F6150SV FOR GOOSE PUBLISHING & SUBSCRIPTION



SCANNING & LOGGING



ANNUNCIATOR PANEL HELPS VISUALIZE TEST



TESTING WITH GOOSE MESSAGES

61850 Test

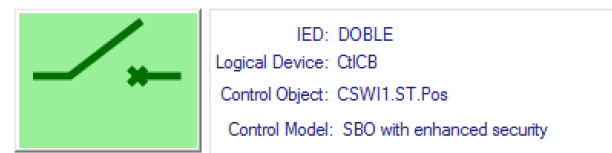
Simulate, monitor and test IEDs on your digital substation network with 61850 Test software.

Use with Doble's F6150sv and Protection Suite software to apply sampled values (SV) and generic substation event (GSE) simulations to functionally test and receive status messages from substation devices. Create fault conditions to verify control scheme coordination to ensure proper design of IED logic.

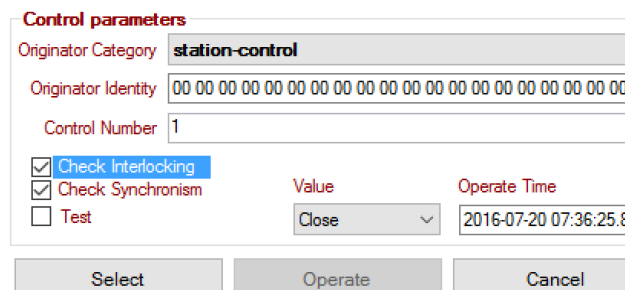
Use this IEC 61850 test software to identify and map logical nodes or objects to virtual inputs on the F6150sv. Then use Doble's Protection Suite testing software to verify the performance of your protection system.

Read SCL files or discover IEDs in the network, and configure the F6150sv for GOOSE message subscription and publishing in preparation for testing. Use the live data, annunciator and logging features to visualize the test.

Use the built-in client simulator to read reports, request information from IEDs, and test the control functions such as closing a circuit breaker with interlock checking and synchro-check.



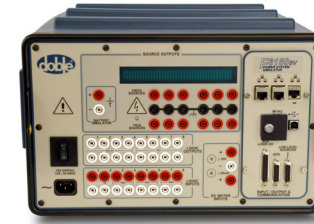
Open Enable expert features



Status

Timestamp	Status	C...	Addcause
2016-07-20 07:34:56.260	Select command issued succe...	122	Success
2016-07-20 07:35:06.112	Operate command failed	2	Blocked...
2016-07-20 07:35:14.694	Select command issued succe...	122	Success

CLIENT SIMULATOR BREAKER CONTROL



F6150sv* Power System Simulator



F6350e External Amplifier



F6052 Universal Time Synchronizer

PROTECTION HARDWARE

Doble's F-Series power system simulators are the industry's trusted diagnostic device for protection testing.

Testing requirements can vary from team to team and company to company.

That's why Doble's F-series power system simulators are customizable. Choose what functions you need in order to perform testing of protection devices and schemes.

You can maximize your testing capabilities with accessories for communication, amplification, calibration and more.

From manual testing through to high burden testing, choose the options and accessories that make sense for your budget and business requirements.

*The F6150sv is UCAIUG IEC 61850 certified Level A by DNV-GL for:
- IEC 61850 Server (GOOSE Publisher/Subscriber), Editions 1 and 2
- IEC 61850 Sampled Values 9-2LE Publisher, Edition 1



DUC Doble Universal Controller



F6080 Field Calibration Unit

PROTECTION TRAINING



We offer a wide range of protection training courses that will help prepare you for a modern grid, power plant and industrial facility.

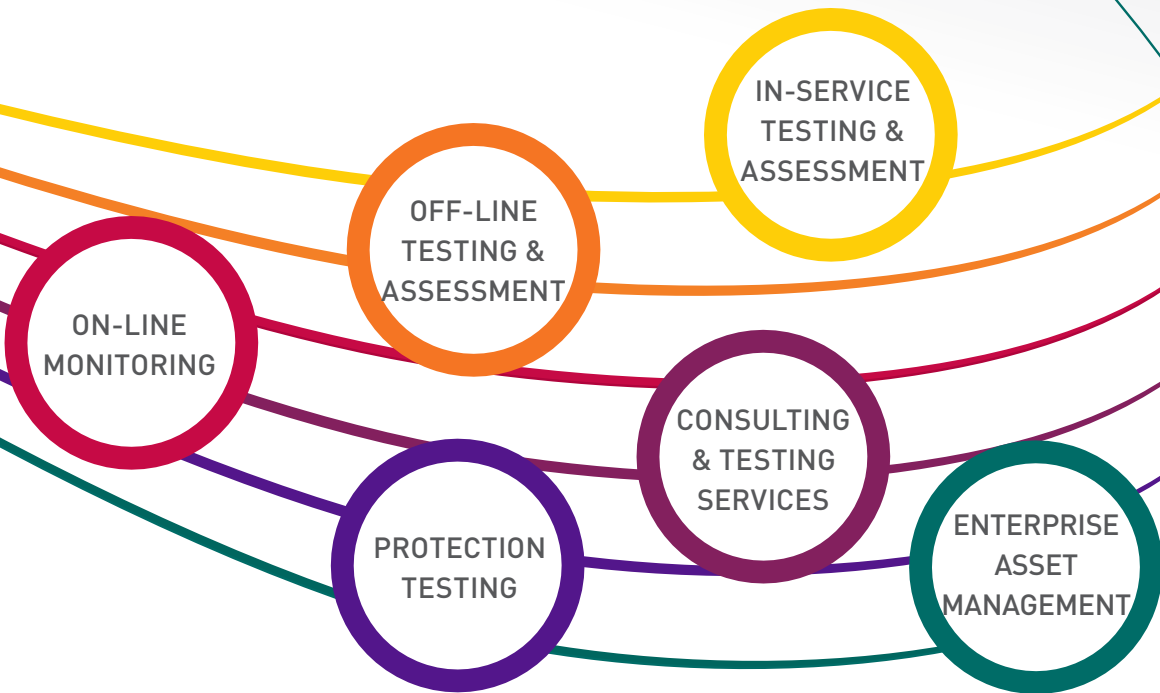
Training courses are presented in an easy to understand format with real life case studies and examples for a truly unique training experience.

Choose which courses are right for you and your team.

Classes are geared towards engineers, technicians, supervisors and managers who are involved with protection assets.

Learn more at events.doble.com/protection

OPTIMIZE OPERATIONS WITH DOBLE'S RANGE OF DIAGNOSTIC SOLUTIONS



www.doble.com

Doble Engineering Company

Worldwide Headquarters | 85 Walnut Street, Watertown, MA 02472 USA

This brochure is for promotional use only. © Doble Engineering Company