

DOBLE ENTERPRISE ASSET MANAGEMENT

dobleARMS®

Asset Risk Management System

UNDERSTAND ASSET CONDITION, CONDUCT LONG-TERM PLANNING AND PREVENT IMPENDING FAILURES

Doble's Asset Risk Management System (dobleARMS®) brings decades of knowledge and experience with power systems diagnostics and data analysis to the areas of online monitoring, condition assessment and the strategic management of assets. It's a new breed of application offering real-time event notification around a sophisticated suite of analytics that are infused with Doble's expertise in asset life-cycle and associated risks. dobleARMS® provides intelligent alerts and event notification so organizations can make more informed decisions between times of crisis and long-range operational planning. With dobleARMS®, companies can move beyond traditional notions of condition-based maintenance allowing employees to think more strategically about managing risks.

dobleARMS® is a cost-effective tool for monitoring assets across the enterprise and providing the needed information to maintain and optimize assets - thereby reducing unplanned shutdowns, boosting production, increasing operational efficiency and decreasing maintenance costs.

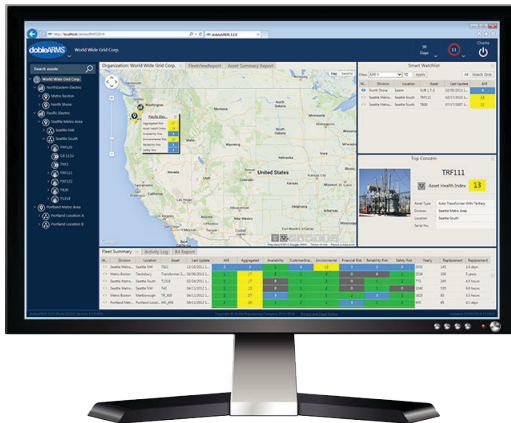
The dobleARMS® Difference

Too few or too many details - those are the typical complaints about most asset management systems. Asset managers need to know when a "notification" is a real or developing problem, and which asset needs the most attention. That's why dobleARMS® combines real-time with online and offline data sources and then compares the analytic results to Doble's decades-worth of benchmark data on asset performance. Doble's knowledgebase contains 80 years of information and over 35 million records from equipment around the world, and offers a considerable advantage to enhanced interpretation and analysis of asset issues.

A Consolidated View

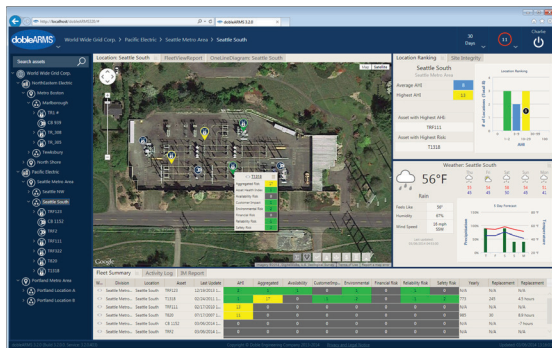
dobleARMS® is transformational by providing a clear view of asset health from the convenience of your workstation. Instead of wasting critical time searching for the right information, dobleARMS® searches for the needle in the haystack which is an asset event, and rolls up the salient details to a higher level - offering a consolidated geospatial view with clear, visual understanding of asset condition, criticality and risks.

dobleARMS® gives you the power to drill down to the specific details you want and need to see.

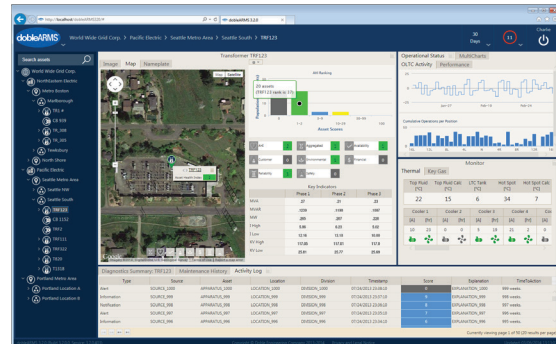


A COMMON SENSE APPROACH TO THE SMART GRID

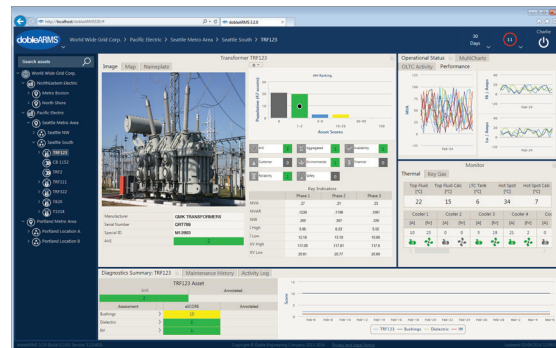
- Meets FERC, NERC and NIST security and Smart Grid Standards
- Flexible, secure and scalable infrastructure supporting offline and real-time data collection from a variety of data sources
- Places a non-proprietary layer of model management on top of “point-based” protocols
- Eliminates the need to manually manage interface points and changes



Substation view – Summary of assets by substation site, providing specific substation detailed view, comparable positioning to rest of sites locations in your fleet.



Apparatus view – Presents key details on a specific unit’s status and snapshot of comparable positioning to rest of fleet, as well as summaries of the automated data analysis.



Assessment view – In-depth detailed rendering on key subsystems of an asset, with full results view of the automated data analysis.



Doble Engineering Company
 Worldwide Headquarters
 85 Walnut Street, Watertown, MA 02472 USA
 tel +1 617 926 4900 | fax +1 617 926 0528
www.doble.com

Specifications are subject to change without notice.
 Doble is ISO certified.
 Doble is an ESCO Technologies Company.
 MKT_SL_ARMS_03/16